

JASON WALKER VESTIGIUM

NEWLYN
ART GALLERY
& THE
EXCHANGE

THE PICTURE ROOM
13 JUN – 20 JUL 2024

Jason Walker is highly regarded for his sensitive portraits and his thoughtful depictions of everyday objects. His approach to painting is accompanied by a command of tonal values and refined use of colour, which both inform and give a subtle presence to his chosen subject.

Jason graduated from Falmouth College of Art in 1992. As well as a series of solo and mixed exhibitions, he has won prizes in the Discerning Eye Exhibition, the Hunting Art Prize and exhibited in the National Portrait Gallery's BP Portrait Award, for the last five years. In 2004 he won the Holburne Portrait Prize and was commissioned to paint Glastonbury Festival founder, Michael Eavis. The portrait is now in the permanent collection at the Holburne Museum of Art in Bath.

"In these drawings I hope to describe the particularity of each object, to reveal something of their quiet beauty, and how, although still of themselves they have been altered by time and tide and now wear a new guise. It is their perceived insignificance their fragility, their permanence, and their resilience that captivates me, they are of us yet alien, they are our blight and at the same time evidence of our presence. Most of the drawings were done in the evenings, often late into the night, quietly in my safe space far away from a world that seems to be spiralling, a world that at times feels too big for me. These drawings take time, and it is in the process, the reverie that I find catharsis, the temporality of careful observation and considered scrutiny, this 'process' is for me, a place of refuge.

"I confess, I didn't expect to be making works of this nature, it was never my intention to revisit the still life as a subject, or indeed to make work that employed such close observation, However, it has been a while since I last made work and starting again with paint seemed too big a step, so my thoughts were to keep it simple, an object, some pencils, and some paper, and this small group of drawings is what came of that....."

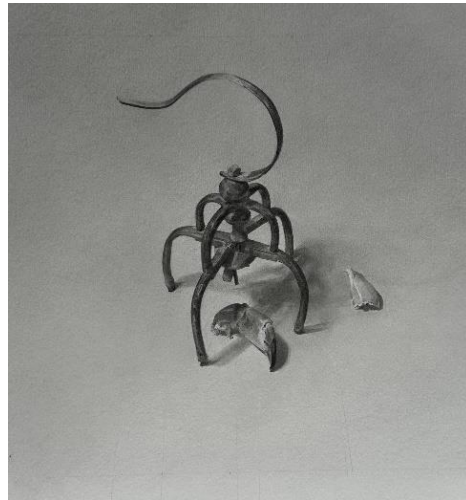
There is a distinction between fact and truth. Truth has an element of revelation about it. If something is true, it does more than strike one as merely being so.

Lucian Freud

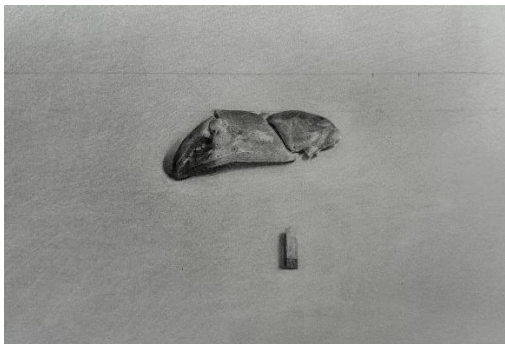
LIST OF WORKS



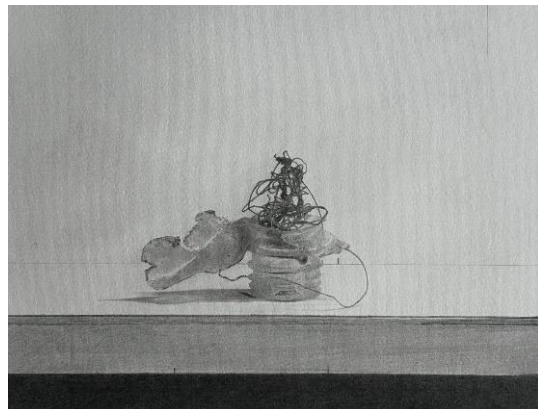
Bone
22 x 16cm
Graphite on paper
£250



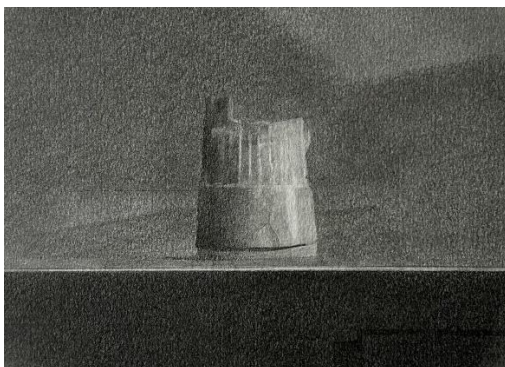
Cage
20 x 22cm
Graphite on paper
£650



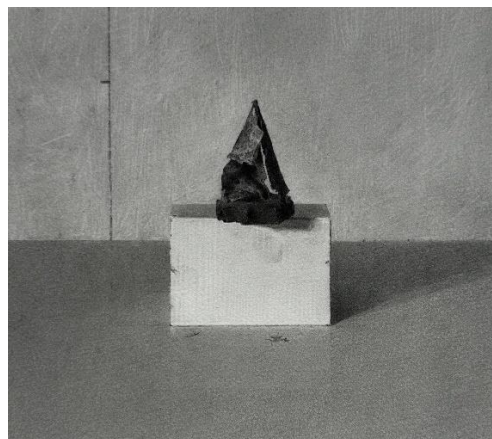
Claw with Chalk
24 x 18cm
Graphite on paper
£550



Cap and Twine
30 x 22cm
Graphite on paper
£650



Castle
20 x 14cm
Graphite on paper
£250



Omen
20 x 17cm
Graphite on paper
£350

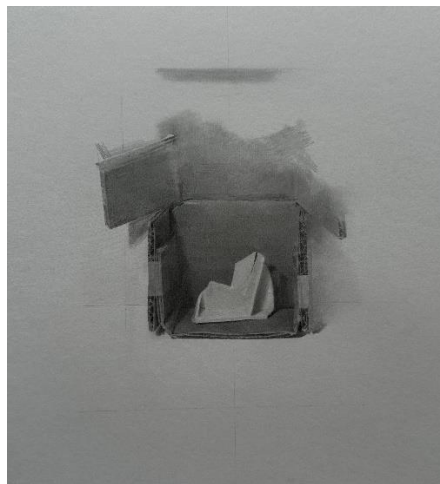


They Fell from the Sky

20 x 17cm

Graphite on paper

£550



Gift

18 x 20cm

Graphite on paper

£550



Fructus

60.5 x 35.5cm

Graphite on paper

£1400

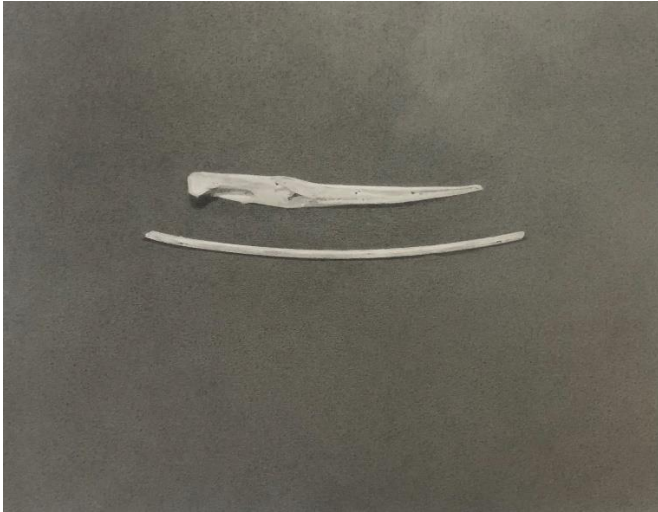


Treasure Trove

25 x 25cm

Graphite on paper

£1050



Two Forms - Wood and bone

26 x 20cm

Graphite on paper

£450



Gallery Art Sale
Terms & Conditions

Gallery Patrons and Supporters receive a 10% discount on purchases made in The Picture Room. If you have any questions please ask at the front desk.

newlyngallery.co.uk 01736 363715



Supported using public funding by
**ARTS COUNCIL
ENGLAND**

