

# DREAMLANDS GROUP SHOW 2024

THE PICTURE ROOM  
25 JUL – 7 SEP

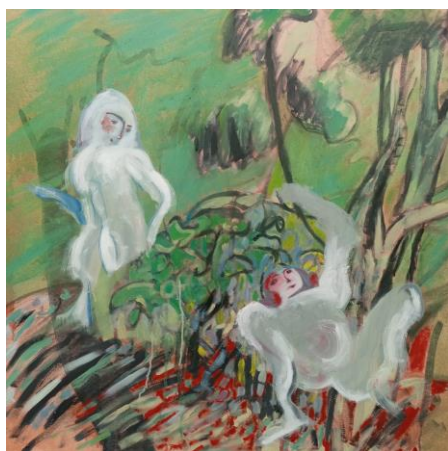
NEWLYN  
ART GALLERY  
& THE  
EXCHANGE

DREAMLANDS is a group show celebrating local artists, each working in a different medium. All the artists have explored themes around imaginal; denoting what pertains to image, or imaginary; what exists only in fantasy and has no real existence, ideas are formed from myth, nature, childhood, or a dreamlike state.

## CHLOE BONFIELD

Chloe Bonfield has worked as an illustrator and artist since 2008. Chloe began working as a painter in 2023 and informs the paint closely with a drawing practice. A search is carried out for ways in between worlds, for images that travel and in doing so point out to us where to look.

Drawing as note-taking and transformation into painting aids the representation of our disintegrating cosmology, in the face of the evergreen undergrowth. As the world changes, our tropes are reinvented and misunderstood. Painting a bit like an ever-changing meme. But really, you are in the middle of the event, of the act, the relish of that keeps you going.



**Bathers**  
101 x 93cm  
£1600



**Bed at the Piggery**  
21 x 29cm  
£325



**St Elmer**  
101 x 93cm  
£1600



**Lunar Phoebus**  
147 x 170cm  
£2000



**Dream Tea 1 & 2**  
13 x 18cm  
£160 each



**Hairy Sun**  
13 x 18cm  
£160



**Redweed**  
13 x 18cm  
£160



**Saskia**  
13 x 18cm  
£160



**Smooch**  
13 x 18cm  
£160

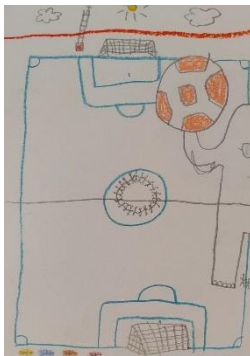


**Sleeper**  
13 x 18cm  
£160

## THEO CARTER-WEBER

Theo's practice explores energy and observation. He creates drawings from a place of instinct, using playful mark-making as a focus. The work is filled with narrative, often using familiar objects, inviting the viewer to connect to their personal experiences. He often includes his love and fascination for animals and their roles as spirit guides.

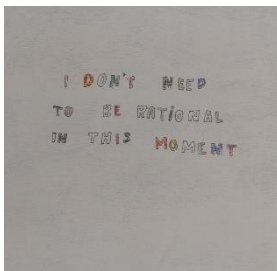
Theo regularly practices reiki and integrates affirmations. Currently, his work and projects explore fatherhood, communal practices, childhood, vulnerability, and healing. He works with young people as an art specialist and learning facilitator at Tate St Ives and Space For You, Penzance as well as many other schools and organisations as a self-employed arts practitioner.



**Football and Elephants help me feel better connected to others**  
Pencil and pastel on paper  
15x21cm, £180



**I lighten my body with fun**  
Housepaint, pencil and pastels on wood panel  
20x20cm, £130



**I don't need to be rational in this moment**  
Housepaint, pencil and pastels on wood panel  
20x20cm, £130



**Rainbow slide and rolling ball help you overcome your challenges**  
Pencil and pastel on paper  
15x22cm, £180

## IMOGEN ALLEN

This series of paintings captures the vibrant and emotive essence of anemones, flowers given to Imogen by her partner Pete during her recovery from a surfing injury. Purchased from the long-standing flower stand near Treen, which she has been visiting since childhood on the way home from the beach, these blossoms became her muse and inspired a collection that delves deep into the interplay of colour and form. Drawing from life, Imogen focused on the rich purples and blues of the petals, seeking to convey their sensitive yet vivid nature.

Influenced by the psychological space explored in Mark Rothko's colour field paintings, Imogen played with the composition of the petals, balancing delicate mark-making with broad sweeps of colour. This approach creates paintings that resonate with an energetic aura, reflecting the dynamic relationship between form and the formless. Rooted in the natural world, yet transcending into an abstract language, this series aims to evoke a visceral sense of feeling and connection within personalised experiences with nature.



**Anemones 1**  
Oil on canvas  
18x24 cm, 2024  
£550



**Anemones 2**  
Oil on canvas  
18x24 cm, 2024  
£550



**Anemones 3**  
Oil on canvas  
18x24 cm, 2024  
£550



**Anemones 4**  
Oil on canvas  
18 x 24 cm, 2024  
£550

## MARIANNE NICHOLS

Primarily a painter of abstract landscapes, Marianne's inspiration arises from a strong affinity with the sea and the Cornish coast. Throughout the painting process she uses a mixture of both intuitive and considered techniques to reflect her personal response to an environment. Hoping that her work in turn brings that experience to the viewer and resonates with them.

Marianne's underlying focus throughout the painting process is the energy and life within a landscape, be that wild, turbulent, serene, dark or light. Using various tools, gestural marks, layering, scraping, or washing away, she is able to create depth and texture. She works towards producing an image that will grab the viewers' attention and entice them to look further.



**Drift**

Acrylic and locally gathered pigment on board.  
Framed in white tray frame.  
Image size 60 x 20cm  
£400



**Cresting wave**

Acrylic and locally gathered pigment on board.  
Framed in white tray frame.  
Image size 60 x 20cm  
£400



**Water's edge**

Acrylic on board. Framed in white tray frame.  
Image 40x15cm  
£275



**Shifting Tide – Mounts Bay**

Acrylic on board. Framed in white tray frame.  
Image 40x15cm  
£275

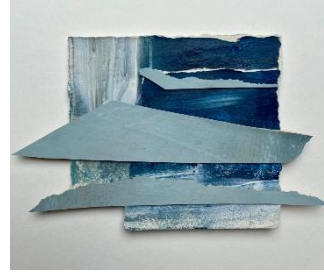


**Spindrift – Porthcurno**

Acrylic on board. Framed in white tray frame.  
Image 40x15cm  
£275



**Imagined shore - 1**  
Mixed media collage  
Glazed box frame 31x22cm  
£190



**Imagined shore - 2**  
Mixed media collage  
Glazed box frame 31x22cm  
£190

## KINSLEY BYRNE

The creative work of Kinsley Byrne is a visual testimony to humankind's primitive impulse: to make.

"My work explores the making of furniture and symbolic artifacts through direct carving in wood. Finding expression through ideas with a metaphorical connection to existence and the human journey. Honing simple forms, this creative practice allows for a greater framework to express ideas and emotions, away from the constraints of traditional joinery."

With nature being a starting point, in the form of massive blocks of orphaned timber, perhaps the result of an unfortunate West Country lightning strike. A form will emerge, liberated from the grain of timber, using fists, clutching handmade hammers and Japanese steel chisels.

- Memento Mori, Black Oak £15,000
- Figure Beech, Black Beech £2,500
- Ecce Homo, Black Plaster £1,100
- Two Legged Figure, Black Plaster £1,200
- Anchor, Pink Plaster £1,000
- Horse, Pink Plaster £450
- Bird, Black Plaster £280

## MICHEL FRANCOIS

Michel uses ancient timeless techniques to create functional vessels. They benefit from a purity of form giving them a sculptural quality. His own glazes are crafted using Feldspar, Cornish stone and ash from local trees, such as Chestnut, Ash, and Beech. By starving the kiln of oxygen, he draws minerals and oxides from inside the clay to the surface. There they react with the ash glaze, combining to act as prisms that filter and reflect light. This process ensures that each piece is unique.

Michel graduated from Falmouth University, then was an artist in residence at the Leach Pottery, St Ives, Cornwall. Following this, he set up his own studio in Falmouth. Michel's work has been shown extensively in the UK and internationally. His work has been shown in Paris (Gallery Art Présent), London (Gallery 43 Mayfair), Edinburgh and Taipei (International Teabowl Exhibition). He has also co-designed and produced a new range of tableware for the Eden project, facilitated with the aid of a research grant from AIR (Academy of Innovation and Research).

- Porcelain Moon Jar £1,600
- Jade Porcelain Bottle Vase £400
- Porcelain Long Neck Vases £400
- Porcelain Wide Neck Vases £300
- Medium Bowl £200
- Wine Pourer £200
- Tea Bowl £50
- Small Pourer £50

Gallery Patrons and Supporters receive a 10% discount on purchases made in The Picture Room. If you have any questions, please ask at the front desk.



Gallery Art Sale  
Terms & Conditions

[newlyngallery.co.uk](http://newlyngallery.co.uk) 01736 363715



Supported using public funding by  
**ARTS COUNCIL  
ENGLAND**

