



NEWLYN ART GALLERY & THE EXCHANGE

ABOUT US & THIS OPPORTUNITY



Newlyn Art Gallery from Newlyn Green

For over 125 years, Newlyn Art Gallery has been bringing the best in contemporary art to audiences in the south west. In 2007 the gallery was redeveloped, and we opened a second venue, The Exchange in Penzance and we now offer a wide and varied programme of contemporary art exhibitions and projects across our sites, presenting work in all media by regional, national and international artists.

Increasingly in recent years, our programmes have reached out beyond our galleries into other settings, including care homes, schools and other public spaces, from beaches to places of worship, in order to realise our commitment to reach the broadest and largest audiences we can. We recognise that to increase our success in reaching diverse audiences, our own staff teams, and those of our peer galleries across the country, have to be more diverse too. Our staffing team and Board are therefore committed to showing leadership on issues of equity across our sector. We are registered as a Disability Confident Employer.

We are an Arts Council England National Portfolio Organisation and a Strategic Arts Client of Cornwall Council. We are a Plus Tate member and in 2019 became an Arts Council Collection National Partner. Find out more at www.newlynartgallery.co.uk.

OUR VISION

The gallery was founded by the Philanthropist and social reformer John Passmore Edwards in 1895. He was committed to improving people's lives and felt that art had an important role to play. This vision has inspired us to think more ambitiously about our work with communities and how we might involve them more actively in shaping and leading our work. We are particularly interested in how the gallery might embrace its civic role and become relevant and important to more people.

AN INCLUSIVE APPROACH TO RECRUITING

[The 2019 Arts Council England Diversity Report](#) highlights that people from a Black, Asian and diverse backgrounds and people with disabilities continue to be under-represented across the arts and cultural workforce. This applies in particular to the leadership of the sector compared to the total working population.

We are particularly interested in applicants' ability and potential, rather than their qualifications and experience. We also understand that some candidates will be looking for a degree of flexible work, and we will always try and accommodate that. For this reason, the post has been designed to accommodate those who may be unable to relocate to Cornwall to take up the opportunity. As users of the Disability Confident Scheme, we guarantee to interview all applicants according to the scheme criteria. Should you be successful after the initial application stage, please discuss with us any reasonable adjustments to our recruitment process that you may require.

A COVID 19-SAFE WORKING ENVIRONMENT

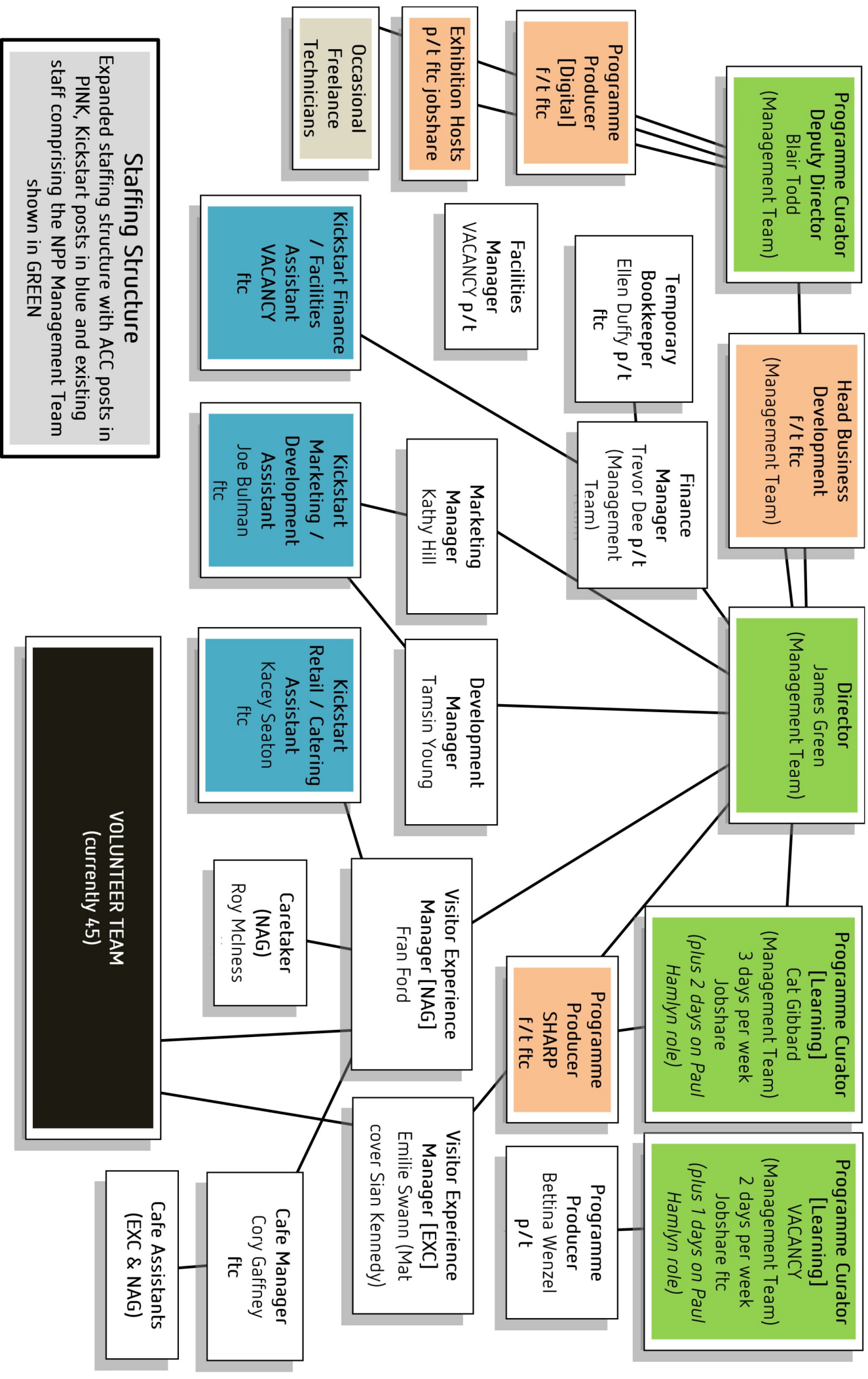
Covid-19 has changed the way we all work, and we have had to make changes to our operations in order to ensure the safety of staff, including our volunteers, and visitors. As part of our flexible working arrangements, we now actively encourage home working. We envisage that this role can be successfully delivered by a staff member working remotely, so wherever you live we would still encourage you to apply. A regular presence at the gallery's two sites is therefore not essential, but we would hope occasional visits could be made, particularly at the commencement of the role.

We want to make sure we do all we can to make your role a positive experience for you. Therefore, if you require reasonable adjustments or additional support, please get in touch with James Green, Director on 07729 333 016 or email james.green@newlynartgallery.co.uk, who will provide you with what you need.

THE TEAM

You'll be joining a small and friendly team of staff, supported by a large and talented pool of volunteers. You may be based at home or at either Newlyn Art Gallery or The Exchange in Penzance, but we encourage all of the team to split their work across both sites, as much as is possible. Both are equally important to us.

Whilst we are flat in culture, the organisational chart on the following page shows where your role sits in the organisation.



Staffing Structure

Expanded staffing structure with ACC posts in PINK, Kickstart posts in blue and existing staff comprising the NPP Management Team shown in GREEN

ARTS COUNCIL COLLECTION NATIONAL PARTNERS PROGRAMME

BACKGROUND

The National Partners Programme 2019 – 2022 is a partnership between the Arts Council Collection, Arts Council England, Newlyn Art Gallery & The Exchange, Firstsite in Essex and Sunderland Culture. The collective aim is to exhibit and respond to the Arts Council Collection by presenting 27 exhibitions or projects over a three-year period. The Partnership aims to raise the profile of the Arts Council Collection and the three Partner galleries while attracting new audiences to engage with the very best of modern and contemporary British art. Funded by the National Lottery, the programme aims to build a deeper relationship with audiences by building a UK-wide network across partners, connecting local visitors to their national [collection](#).

The consortium of partners in the Arts Council Collection National Partners Programme is now seeking three individuals, one based in each partner organisation in Cornwall, Sunderland and Colchester. These opportunities differ in scale and scope, dependent upon each partner's organisational needs. Individually and collectively these roles offer you, as a mid-career professional, the chance to develop your leadership skills and contribute to the shared work of this high-profile national programme.

The scheme provides a framework for you to learn as part of a cohort whilst reflecting upon the creative development of audience focused exhibitions utilising a national collection. These three opportunities are designed to *facilitate skills development within the visual arts and provide additional specialist capacity* at partner venues, which you will be supported to develop. As such, these opportunities would particularly suit a mid-career professional looking to develop a highly rewarding career in the arts sector. All partners are committed to supporting you through the provision of training, shadowing and mentoring opportunities.

You will have the ability to co-create your own personal development plan and collaborate across the placement cohort on a project with the Arts Council Collection, alongside your in-house work with the host partner.

This application pack relates specifically to the opportunity of working with Newlyn Art Gallery & The Exchange.

ABOUT THE OTHER PARTNERS

FIRSITE, COLCHESTER

Firstsite is a public contemporary art gallery in Colchester, making and showing exceptional art and culture that celebrates the diverse and radical people of East Anglia in order to empower all communities to be creative together and lead healthier and happier lives. Firstsite's spectacular crescent-shaped building, designed by award-winning Uruguayan architect Rafael Viñoly, provides a creative and social

space like no other. Open all year with free admission and a vibrant programme of exhibitions, films, learning activities, community focused initiatives and events to spark the imagination, alongside a café and shop, Firstsite is for everyone. Since opening in 2011, Firstsite has welcomed over one million visitors and has established its reputation as an art gallery of regional and national importance, presenting ambitious work in a fun and inclusive environment to new audiences in the East of England and beyond. Working with its partners and local community groups, Firstsite's artistic programme brings together many different voices to create exhibitions that speak to the whole of society and provoke conversations about contemporary life, the challenges we face and the solutions which can be created together.

SUNDERLAND CULTURE

Sunderland Culture delivers the programme in five cultural venues: National Glass Centre; Northern Gallery for Contemporary Art; Sunderland Museum & Winter Gardens; Arts Centre Washington and the Fire Station, and with communities across the city. Our mission is to improve life for everyone in Sunderland through culture. We bring together the vision and investment of three main drivers of cultural provision in Sunderland – Sunderland City Council, University of Sunderland and MAC Trust – into a single, resilient organisation that can realise the potential of a city brimming with creative possibilities.

ABOUT THE ARTS COUNCIL [COLLECTION](#)

The Arts Council Collection is the most widely circulated national loan collection of modern and contemporary British art in the world. Founded in 1946, the Collection reaches the broadest possible audience through long loans to public institutions, exhibition loans and touring exhibitions, as well as digital and print publications. It can be seen in exhibitions in museums and galleries across the UK and includes important works by all of the UK's most prominent artists. The Collection is managed by Southbank Centre, London on behalf of Arts Council England and is based at the Southbank Centre. The Collection also has a centre for sculpture at Longside, Yorkshire Sculpture Park. There are now over 8,000 works in the Collection, including paintings, sculpture, original works on paper, prints and moving image. The Collection supports artists in the UK through the purchase and display of their work, and safeguards it for future generations, using the highest possible standards of collection care. Unique among national collections, the Arts Council Collection also lends to numerous public buildings across the UK, including schools, universities, hospitals and charitable [associations](#).

To find out more about any of the partner organisations, all of whom are taking an active role in diversity and inclusion work, please visit:

Arts Council Collection: www.artscouncilcollection.org.uk

Arts Council England: www.artscouncil.org.uk

Firstsite, Colchester: www.firstsite.uk

Newlyn Art Gallery & The Exchange: www.newlynartgallery.co.uk

Culture Sunderland: www.sunderlandculture.org.uk



NATIONAL
PARTNERS
PROGRAMME

