



# NEWLYN ART GALLERY & THE EXCHANGE

## ABOUT US

For more than 120 years, Newlyn Art Gallery has been bringing the best in contemporary art to audiences in the south west. In 2007 the gallery was redeveloped and we opened a second venue, The Exchange in Penzance and we now offer a wide and varied programme of contemporary art exhibitions and projects across our two sites, presenting work in all media by regional, national and international artists. Increasingly in recent years, our programmes have reached out beyond our galleries into other settings, including care homes, schools and other public spaces, from beaches to places of worship, in order to realise our commitment to reach the broadest and largest audiences we can. We are an Arts Council England National Portfolio Organisation and a Strategic Arts Client of Cornwall Council. We are a Plus Tate member and recently became an Arts Council Collection National Partner. Find out more at [www.newlynartgallery.co.uk](http://www.newlynartgallery.co.uk)

Newlyn Art Gallery, from Newlyn Green



## OUR VISION

The gallery was founded by the Philanthropist and social reformer John Passmore Edwards in 1895. He was committed to improving people's lives and felt that art had an important role to play. This vision has inspired us to think more ambitiously about our work with communities and how we might involve them more actively in shaping and leading our work. We are particularly interested in how the gallery might embrace its civic role and become relevant and important to more people.

## AN INCLUSIVE APPROACH TO RECRUITING

All the data shows that in spite of art organisations' best intentions, those recruited into positions in public galleries tend not to reflect the diversity of the UK workforce. We'd like to change that. We want Newlyn Art Gallery & The Exchange to be a place where a diverse mix of talented people want to work, to stay and to do their best work, regardless of age, disability, gender reassignment, race, religion or belief, sex, sexual orientation, marriage and civil partnership, pregnancy and maternity, or class or socio-economic background.

We are particularly interested in applicants' ability and potential, rather than their qualifications. We also understand that some candidates will be looking for a degree of flexible work, and we will always try and accommodate that. As a Disability Confident employer, we will ensure that a fair and proportionate number of disabled applicants that meet the minimum criteria for this position will be offered an interview.

Should you be successful after the initial application stage, please discuss with us any reasonable adjustments to our recruitment process that you may require.

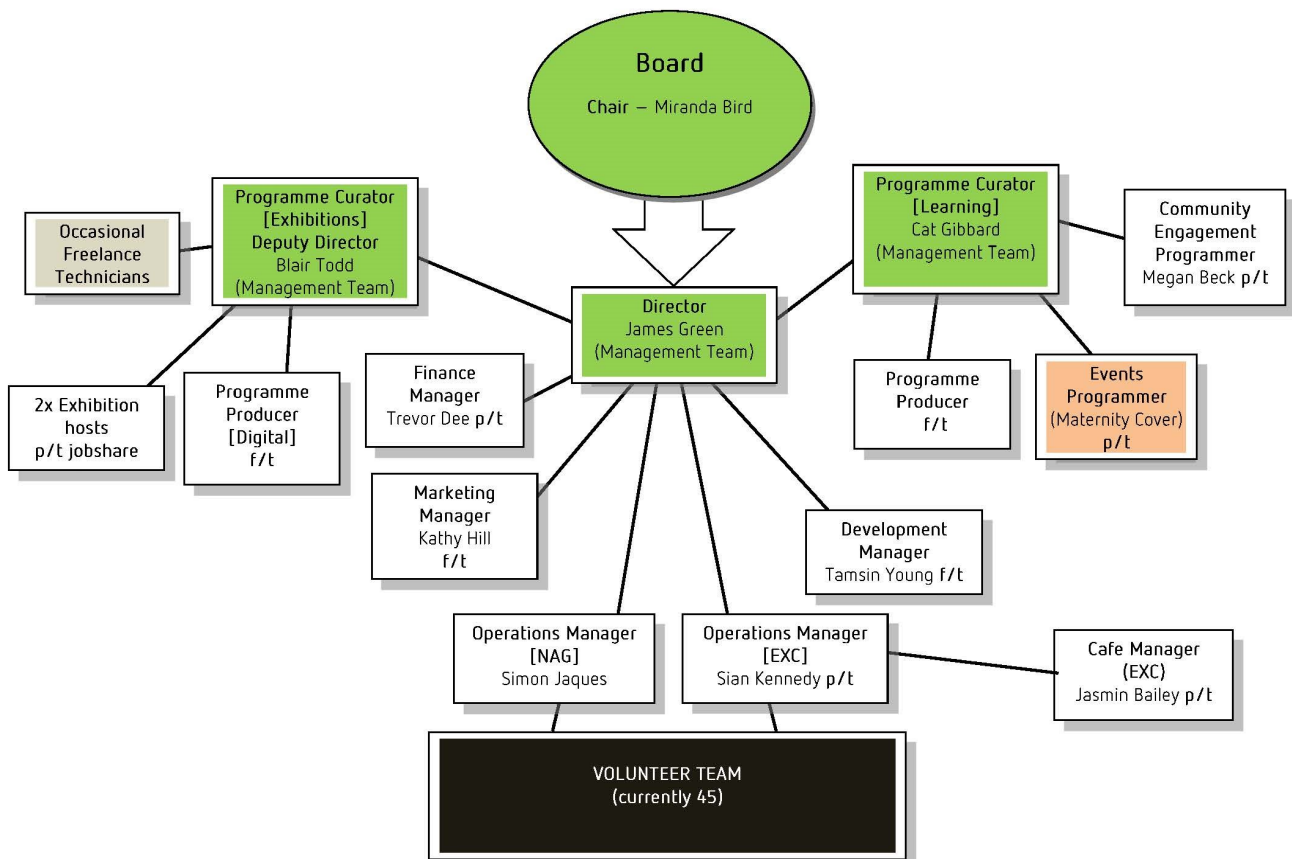


Launch of *Rose Wylie - History Painting*, summer 2018

# THE TEAM

You'll be joining a small and friendly team of staff, supported by a large and talented pool of volunteers. You may be based at either Newlyn Art Gallery or The Exchange in Penzance, but we encourage all of the team to split their work across both sites, as much as is possible. Both are equally important to us.

The chart below shows where you'll fit in and who your line manager will be. It's very likely that you'll work closely with all of your colleagues and many of our volunteers.



Supported using public funding by  
**ARTS COUNCIL  
ENGLAND**



**Arts Council  
Collection**

