

SHELLY TREGONING  
SITTING. SAT. STANDING. STOOD.

NEWLYN  
ART GALLERY  
& THE  
EXCHANGE

23 MAR — 4 MAY 2019

THE PICTURE ROOM, NEWLYN ART GALLERY

In this new body of work Shelly Tregoning continues her exploration of physicality and the interpretation of human gesture. As a painter and printmaker, the artist creates what she refers to as 'non-portraits' – images of the figure in which the identity of the sitter is irrelevant, and our instinctive reading of the human form is everything.

Presented as a series of small canvases and monoprints, this collection responds to conversations surrounding the nature of identity in the 21st century, and seeks to reveal the psychological complexities beneath our conscious presentations of self.

LIST OF WORKS



**Body Blow**  
*oil on linen*  
£495



*Dignity oil on linen £495*



*Fat Bloke monoprint £495*



*The Yell monoprint £495*



*Consequences oil on linen £495*



*Slouch oil on linen £495*



*Man Lean oil on linen £495*



**Domestic Bliss** *monoprint* £495



**Arch** *monoprint* £495



**Twisty Feet** *oil on linen* £495





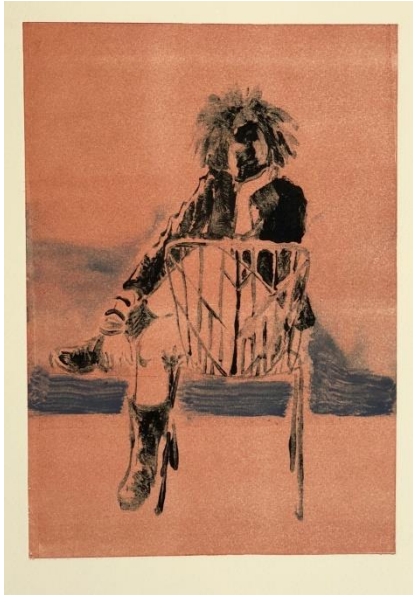
**Wild Country** oil on linen £495



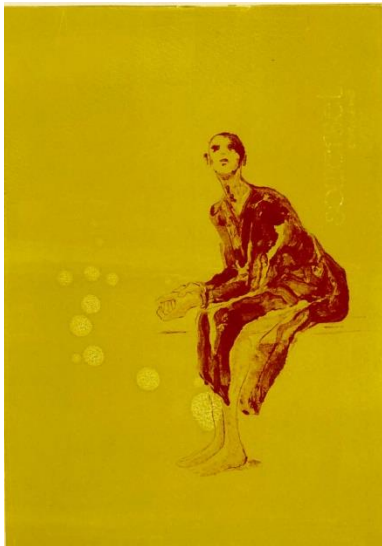
**Blessed** monoprint £450



**Precious** monoprint £450



Come a Long Way *monoprint* £450



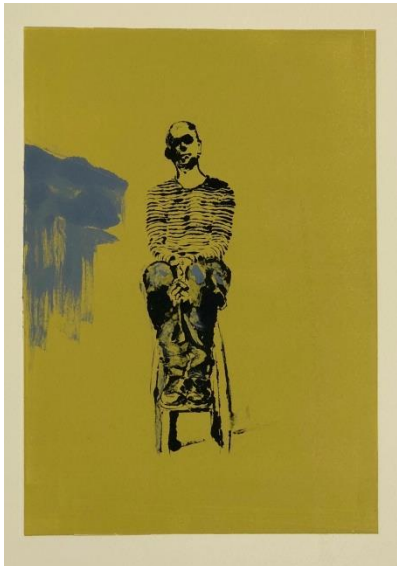
Orange Dress *monoprint* £450



Arch II *monoprint* £450



*Sitting Sat monoprint £450*



*Jon monoprint £450*



*Pete monoprint £450*

## SITTING. SAT. STANDING. STOOD.

In this new body of work, artist Shelly Tregoning continues her exploration of physicality and the interpretation of human gesture. As a painter and printmaker, the artist creates what she refers to as 'non-portraits' – images of the figure in which the identity of the sitter is irrelevant, and our instinctive reading of the human form is everything. Presented as a series of small canvases and monoprints, this collection responds to conversations surrounding the nature of identity in the 21st century, and seeks to reveal the psychological complexities beneath our conscious presentations of self.

Key to these works is the artist's mastery of drawing: through the application of expressive line, she captures the telling nuances of physical poise and tension, and the unguarded moments of distraction, introspection and vulnerability that are expressed in the shape and flex of the body. Isolated against broad areas of vivid, emotive colour, each figure is at once both disturbing and familiar in a way that provokes our innate sense of mutuality. The fleeting moments of physicality that inform these paintings – the submissive slant of the head, the languid curve of the spine or the pressing, reflexive reach of the fingers – reveal the fragile balance between our psychological and emotional existence, and the carefully curated versions of our public self.

---

If you have any questions please feel to ask at the front desk.  
Gallery Patrons and Supporters receive a 10% discount on purchases made in The Picture Room.

Newlyn Art Gallery & The Exchange | [newlynartgallery.co.uk](http://newlynartgallery.co.uk) | 01736 363715



Supported using public funding by  
**ARTS COUNCIL  
ENGLAND**



**TATE  
PLUS**