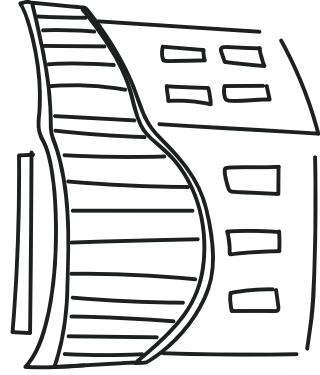
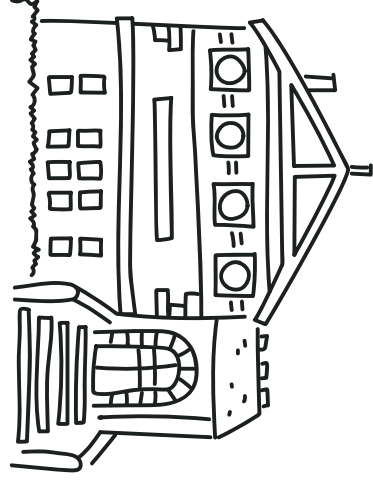


Located off historic Chapel Street, The Exchange is a major contemporary art space in the centre of Penzance. The huge space retains the original industrial feel of the building and features a large T-shaped gallery and a striking glass façade. There is a gift shop and a café serving hot drinks, snacks, and light lunches.



THE EXCHANGE

Newlyn Art Gallery was founded in 1895 and has celebrated contemporary art for more than 125 years. As well as main gallery exhibitions and events, The Picture Room has changing exhibitions of works for sale. The Garden Café serves hot drinks and snacks, with access from Newlyn Green. There is also a well-stocked gift shop.



NEWLYN ART GALLERY

NEWLYN ART GALLERY & THE EXCHANGE

NEWLYN ART GALLERY
New Road, Newlyn TR18 5PZ

THE EXCHANGE
Princes Street, Penzance TR18 2NL

newlynartgallery.co.uk / 01736 363715

   @newlynexchange

Graphic design & illustration by Marta Patti
www.martamaps.com



FREE

Enjoy a 20 to 30 minute
walk along the
seafront between
our two venues

GALLERY TRAIL



THE EXCHANGE

NEWLYN ART GALLERY

By choosing to walk rather than drive between our venues you are helping us reduce our carbon footprint. Thank you!