

NEWLYN ART GALLERY & THE EXCHANGE



NEWLYN ART GALLERY
New Road, Newlyn TR18 5PZ

THE EXCHANGE
Princes Street, Penzance TR18 2NL

01736 363715
info@newlynartgallery.co.uk
newlynartgallery.co.uk

OPENING HOURS
TUE - SAT, 10.00 - 17.00 (until 28 Mar)
MON - SAT, 10.00 - 17.00 (from 30 Mar)

ADMISSION
£3.30 (incl. a Gift Aid Donation, £3 without)
for a week pass; or £7.70 (incl. Gift Aid
donation, £7 without) for an Exhibition Pass,
which allows you to visit and attend events
as many times as you like at both galleries
from 14 Feb to 27 Jun 2020.

Free entry for Patrons, Supporters, U18s
and Local Art Pass holders.

DIRECTIONS
The Exchange is 600m from Penzance bus
and train stations and the harbour car park

Newlyn Art Gallery sits at the end of Newlyn
Green as you approach from Penzance. The
two venues are a 25-minute walk apart.

Newlyn Art Gallery & The Exchange has
supported contemporary artists for 125
years. Today, this means championing
regional artists, presenting an ambitious
national and international exhibition
programme, and extending an invitation to
our audience to come in, be inspired and
take part.

We are a member of Plus Tate, a network of
leading visual arts organisations that works
to increase public value and to broaden and
deepen engagement in art.

ACCESSIBILITY
Newlyn Art Gallery and The Exchange
are both fully accessible. Please contact
the gallery if you have any additional
requirements.

KEEP UP TO DATE
See our website for our full programme
of events and forthcoming exhibitions.

newlynartgallery.co.uk

Follow us on social media @newlynexchange



**NEWLYN ART GALLERY & THE EXCHANGE
IS SUPPORTED BY:**



SELECTED EVENTS

THE EXCHANGE

TEA, CAKE & ART
EVERY TUESDAY, 14.00 - 16.00

A creative social group for older people,
particularly those living alone, to meet and
spend time with others. Join us for tea, cake
and a range of creative activities on Tuesday
afternoons. Free, all welcome.

SCHOOL HOLIDAY WORKSHOPS
19 FEB, 1 APR & 8 APR, 14.00 - 16.00

Artist-led, fun and creative workshops for 7-13
year olds, inspired by our current exhibitions.

See our website for details and booking
information.

LUNCHTIME SCHOOL
ALTERNATE FRIDAYS, 12.30-14.30
FROM FRI 28 FEB

A social group that meets fortnightly
to learn and try new things. For each
Lunchtime School we will invite an artist to
present a concise talk on a specialist subject,
followed by a more informal open discussion
or workshop with the group. Open to all who
are curious.

Free with admission, including Spring
Exhibition Pass.

EXHIBITION PASS
NEW Spring Exhibition Pass lets you
visit both venues as often as you like,
from 14 Feb to 27 Jun 2020 so you
can attend Lunchtime School and Bad
Art Class, as well as repeat visits to
exhibitions, including *Hippo Campus*,
Go On Being So and *Palace of Culture*.

Spring Exhibition Pass, £7.70 (incl. Gift
Aid donation) for visits until 27 Jun.



AUGMENTED REALITY FILTER WORKSHOP
SAT 22 FEB, 12.00 - 14.30

We are very excited to welcome digital
adventurers Keiken back to Cornwall. Join the
London-based collective and learn the basics
of building your first augmented reality filter
for Instagram and Facebook

Free, but please book via Eventbrite.
Suitable for ages 13 and above.

BAD ART CLASS
THURSDAYS IN MARCH, 18.00-22.00

A weekly evening social group in the café,
celebrating the joy of creating art, especially
for those who have been told all their lives
that they can't paint or draw. Pay bar and
group motto of "It's so bad, it's good!".

Free with admission, including Spring
Exhibition Pass.

NEWLYN ART GALLERY

THE MAKERS' MARKET
MON 25 MAY, 10.00 - 17.00

Join us for a celebration of spring at Newlyn
Art Gallery on the May Bank Holiday.
Showcasing artisanal floristry, ceramics,
jewellery, skin care and more. Plus, food
offerings and a pop-up bar in the garden.

Free entry (incl. exhibitions).

SUPPORT US



Photo by Ian Stenson

From its founding in 1895, Newlyn Art
Gallery has embraced a belief that art can
inspire and drive change. Today we are
committed to a programme of social and
civic engagement.

We are offering curatorial responsibility to
young people as part of the Arts Council
Collection National Partners Programme,
working with schools to support and
champion their arts provision, and with the
WILD Young Parent group and the LGBTQIA+
YAY group alongside the Intercom Trust
Charity. With Tea, Cake & Art we continue
to offer art and creativity as an aid to
wellbeing for older people.

Your help, through donations, fundraising
campaigns and Supporter and Patron
subscriptions gives other funders the
confidence to offer their support and often
allows us to access match funding. Thank
you for that help.

**PLEASE CONSIDER BECOMING A
GALLERY SUPPORTER, PATRON,
VOLUNTEER OR BUSINESS
SPONSOR.**

Details available from both our
venues, on our website:
newlynartgallery.co.uk/support-us/
or call 01736 363715.

SHOPPING

Alongside our carefully selected range
of gifts, cards, games and design-
led homewares you'll find beautifully
illustrated books for both adults and
children including the latest titles
on design, architecture and art. We
champion artist-makers, exhibiting a
wide range of ceramics, textiles and
crafts by some of the best makers in
Cornwall making our shops a great place
to find gifts for friends and family.

EAT & DRINK

The Studio Café at Newlyn Art Gallery
offers hot drinks and sweet treats
with a panoramic view of the bay.
At The Exchange, our café serves a
locally sourced vegetarian lunch menu
alongside great coffees, loose leaf teas
and delicious cakes.



Gallery Supporters and Patrons receive
a 10% discount on all shop, Picture
Room and café purchases.

VENUE HIRE

You can hire a variety of spaces across
our two outstanding, contrasting
venues. Fully licensed bars, hospitality
to suit your needs, fully wheelchair
accessible and available at flexible rates.

For details, please contact
catie.close@newlynartgallery.co.uk

NEWLYN
ART GALLERY
& THE
EXCHANGE



ART / CAFÉ
SHOP / EVENTS

SPRING
2020

GO ON BEING SO

14 FEB – 30 MAY

Go On Being So is curated by the MBA Collective, a group of art, photography and graphics students from Mounts Bay Academy aged between 12 and 16 years.

An incidental conversation between the 14 students around what it means to be a global citizen was the starting point for their exploration of the Arts Council Collection, bringing together an intriguing selection of works that say something about the world today and their place in it. MBA Collective looked for works which resonated with them, while also considering pieces that illustrated issues other young people in different parts of the world may be facing.

Artists include Larry Achiampong & David Blandy, Michael Armitage, Margaret Harrison, Claudette Johnson, Young In Hong, Joanna Piotrowski and Ross Sinclair.

The title *Go On Being So* refers to a quest for strength and resilience, as demonstrated in works such as Karl Ohiri's *How to Mend A Broken Heart*, and Rod Dickinson's *Egg Bag*. The title also acts as a provocation, reflected in works such as Gavin Jantjes' *Freedom Hunters* and Donald Rodney's *Self Portrait: Black Men Public Enemy*.

An Arts Council Collection National Partners Programme Exhibition.

Newlyn Art Gallery & The Exchange is an Arts Council Collection National Partner. The Arts Council Collection is managed by Southbank Centre, London on behalf of Arts Council England.



Joanna Price, *Blue Pietà*, 1992
Arts Council Collection, Southbank Centre, London
© the artist's estate. Gift of Charles Saatchi, 1999



Karl Ohiri, *How to Mend a Broken Heart*, 2013
Arts Council Collection, Southbank Centre, London
© the artist

HIPPO CAMPUS: WHERE WE LEARN

14 FEB – 6 JUN



A group exhibition featuring works from the Arts Council Collection that explores alternative schooling, peer-to-peer learning and self-education. *Hippo Campus* looks at how we learn, where we learn, and who we learn from.

Featuring 16 artists, *Hippo Campus* includes photographs of schools and students by Vanley Burke and Tony Ray-Jones, while Emma Kay, Mariele Neudecker and Bob & Roberta Smith explore devices for learning and the fallibility of memory. Jeremy Deller and Andy Holden present mind maps and learning through popular culture, and the development of language and collaborative play are studied by Magda Stawarska-Beavan and Ryan Gander.

The closure of art schools across Britain has been documented by Beck & Cornford, while Benedict Drew offers an alternative curriculum with Open School East.

Other exhibiting artists include Pavel Buchler, Tarik Chawdry, Marcus Coates, Idle Women, Rachael Jones, Simon Patterson and Libuse Taylor.

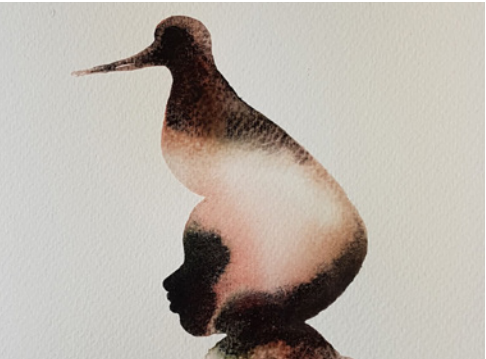
Throughout the gallery there will be small forum areas, with books, archives and pin boards, which expand on themes within the show, and invite contributions from visitors. New social groups, Lunchtime School and Bad Art Class, offer alternative ways of learning for the curious; both are free to attend with the Spring Exhibition Pass.

An Arts Council Collection National Partners Programme Exhibition.

Top: Jeremy Deller, *The History of the World*, 1998. Arts Council Collection, Southbank Centre, London © the artist.

Cover: Andy Holden, *Laws of Motion in a Cartoon Landscape* (film still), 2011-2016. Arts Council Collection, Southbank Centre, London. © the artist

THE PICTURE ROOM & STUDIO, NEWLYN ART GALLERY



Child Soul With Spirit Bird (detail) by Kate Walters

KATE WALTERS
14 FEB – 18 APR

New oil and watercolour paintings by Penzance-based artist Kate Walters created on her recent residency on Iona.

Island Bodies is a reflection on islands, human and non-human bodies: their fluids, and where they overlap.



Digitalis and Lonicera Periclymenum by William Arnold

WILLIAM ARNOLD
20 APR – 27 JUN

West Cornwall-based artist William Arnold will exhibit an ongoing body of work that documents - in razor-sharp detail - specimens of flora collected in neglected places, roadsides, industrial sites and business parks in an homage to the pioneers of Victorian botany.

IN THE STUDIO CAFÉ



Black oval vessel by Richard Phethean

RICHARD PHETHEAN
20 APR – 27 JUN

2019 marked a significant development in Richard Phethean's work. Now established at a creative ceramic studio in west Cornwall he has embarked on a new series of works which use a coarse, black earthenware clay, making thrown, altered and assembled pieces, incorporating, hand cut stencils and overlays of brushed slips and glazes. This new work combines references to ancient pottery, European slipware traditions, 20th-century abstract painting and his lifelong connection to the Cornish coastline and geology.

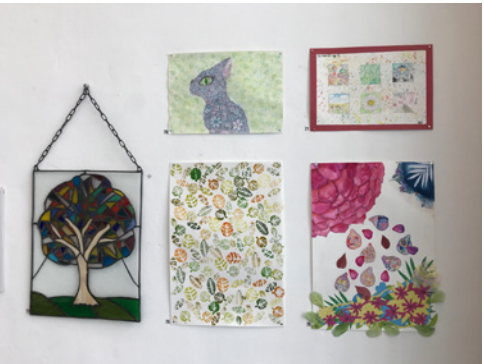
THE ENGINE ROOM, THE EXCHANGE

ARTS COUNCIL
COLLECTION FILMS
19 OCT – 14 MAR

We continue to present two moving image works from the Arts Council Collection; Eric Fong's *Harry* and Breda Beban's *Walk of Three Chairs*, both from 2003.

We have created a comfortable seating area to watch the films, and you are welcome to take in coffee and cake from the café.

YOUNG PEOPLE'S
ART PRIZE
20 MAR – 18 APR



Young People's Art Prize 2019

What's Your Issue?

Celebrating the tenth anniversary of our popular county-wide art prize for young people between the ages of 11 and 19, this year's theme is the art of protest.

There are three age categories with prizes, and The Visitors' Vote prize, awarded by the gallery at the end of the exhibition to the artist whose work received most votes by the public.

Prize winners will be announced at the Prize Giving on Thu 19 Mar at 18.00

GALA DINNER
We will be celebrating 125 years since the opening of Newlyn Art Gallery with a Summer Gala Dinner in June. Join our mailing list to receive details as they are finalised.

UPCOMING EXHIBITIONS

PALACE OF CULTURE
Newlyn Art Gallery
6 – 27 JUN

Designed and programmed in collaboration with pupils from Newlyn School, Newlyn Art Gallery will be transformed into an inspirational setting for three weeks of intense, art-based activity.

SEASIDE PHOTOGRAPHED

Newlyn Art Gallery | The Exchange
4 JUL – 26 SEP | 11 JUL – 3 OCT

This major exhibition looks at the relationship between photography and the British seaside from the 1850s to the present day. Images of the beach, hotel life, the holiday camp, dressing up and dressing down, wild waves and coastlines all combine to create a rich picture of British resorts.



Image: Down to the Beach (detail). Photographer: Raymond C Lawson. Courtesy of Nicholas Cordes, with kind permission of the Lawson family