

## SELECTED EVENTS

### THE EXCHANGE

#### CONCERT: A CERTAIN KIND OF LIGHT

FRI 16 JUN, 20.00 (DOORS OPEN 19.30  
PERFORMANCE WILL END 21.15)

Soprano Juliet Fraser returns with a specially created programme of new compositions for voice and fixed audio that voyages through meditation, memorialising, murmuring and mimicry to cast new light on what it means to sing and to be a singer. *Tickets on the door, £10 Adults / £5 U18s*

#### THE MAKERS' MARKET

SAT 24 JUN, 10.00 - 17.00

Mazey Day is Market Day! With a great selection of stalls by local and regional makers, including potters, print makers, jewellers, clothes makers and more, we are celebrating talent in Cornwall and beyond. If you're after a truly special find this is for you! *£2 entry.*

#### LET'S CELEBRATE!

WEDS IN AUG, 14.00 - 16.00

Children's workshops, for all ages, U7s to be accompanied by an adult. Led by Alice Ellis-Bray this exclusive series of workshops celebrates ten years of creative activity. *£5, booking through eventbrite.*

### NEWLYN ART GALLERY

#### AUGUST BANK HOLIDAY

MON 28 AUG

As part of *Craftschool* and Newlyn Fish Festival you can watch outdoor craft demonstrations throughout the day. You can also enjoy a delicious cream tea in the Studio Café.

Lightwave, by Peter Freeman, the light display illuminating the glass façade of the building that he first created when the Gallery opened in 2007

## SHOPPING

Our shops stock a huge selection of cards, gifts and stationery, alongside a range of ceramics, jewellery and textiles by Cornwall based artists and makers. Our bookshops specialise in titles on contemporary art, lifestyle and design, as well as beautiful children's books including pop-up and *How To* guides. Our range of limited edition prints and artworks by local and national artists is always growing, meaning you'll always be able to find the perfect gift.



#### EAT & DRINK

A range of tasty vegetarian and vegan dishes are available throughout the day at The Exchange Café. Great coffee and a selection of cakes and pastries are always available at both venues. Both venues will be hosting pop-up supper clubs throughout the summer including our popular Sushi nights at Newlyn Art Gallery, and Mediterranean feasts at The Exchange. See our website for details.

#### VENUE HIRE

You can hire a variety of spaces across our two outstanding, contrasting venues. Fully licensed bars, hospitality to suit your needs, fully wheelchair accessible and available at flexible rates. Contact: [bettina.wenzel@newlynartgallery.co.uk](mailto:bettina.wenzel@newlynartgallery.co.uk) for details.

## NEWLYN ART GALLERY & THE EXCHANGE



NEWLYN ART GALLERY  
New Road, Newlyn TR18 5PZ  
THE EXCHANGE  
Princes Street, Penzance TR18 2NL

01736 363715  
[info@newlynartgallery.co.uk](mailto:info@newlynartgallery.co.uk)  
[newlynartgallery.co.uk](http://newlynartgallery.co.uk)

OPENING HOURS  
MON - SAT, 10.00 - 17.00

ADMISSION  
£2.20 (incl a Gift Aid Donation, £2 without)  
Free entry for Supporters, U18s and Art Pass holders.

Newlyn Art Gallery & The Exchange has been dedicated to supporting contemporary artists since 1895. Today, this means championing new and emerging regional artists, presenting an ambitious national and international exhibition programme, and extending an invitation to our resident and visiting audience to come in, be inspired and take part.

We are a member of Plus Tate, a network of leading visual arts organisations that works to increase public value and to broaden and deepen engagement in art.

#### DIRECTIONS

The Exchange is 600m from Penzance bus and train stations and the harbour car park. Newlyn Art Gallery sits at the end of Newlyn Green as you approach from Penzance. The two venues are a 25-minute walk apart.

#### ACCESSIBILITY

Newlyn Art Gallery & The Exchange are both fully accessible. Please contact the gallery if you have any additional requirements.

#### JOIN US

As a Volunteer, Supporter or Gallery Patron, you are part of the life of the Gallery and enjoy social, creative, and professional benefits. All donations, including Supporters' and Patrons' subscriptions, in this our 10th Anniversary Year and until 2019, will be matched, thereby doubling their value, by Catalyst: Evolve funding. See our website for details, call or email [tamsin.young@newlynartgallery.co.uk](mailto:tamsin.young@newlynartgallery.co.uk)

#### KEEP UP TO DATE

See our website for our full programme of events and forthcoming exhibitions. Follow us on social media for updates and the latest news.

[newlynartgallery.co.uk](http://newlynartgallery.co.uk)  
[@newlynexchange](https://www.instagram.com/newlynexchange)



NEWLYN ART GALLERY & THE EXCHANGE IS SUPPORTED BY



# NEWLYN ART GALLERY & THE EXCHANGE

SUMMER  
2017



ART / CAFÉ / SHOP / EVENTS

## WHAT IS THIS PLACE?

22 APR – 15 JUL

The paintings by the eight artists in this exhibition share a sense of improvisation. Like the act of drawing, they are a way for the artist to work through ideas and pose questions. Their marks have been made with a speed and spontaneity, executed quickly to capture changing thoughts and situations.

Some of the artists have been drawn to a particular location or subject, repeatedly, to better understand it; tapping away till it reveals itself. For others, there is an underlying questioning of the social and political landscape of the world today.

Memory, and its fluid versions of truth, often acts as a source or starting point, to revisit, to reimagine. From the commonplace to the cosmic, the eight artists in this exhibition are questioning with paint, *What is this place?*

Artists in the exhibition: Samuel Bassett, Romi Behrens, Gordon Dalton, Freya Douglas-Morris, Danny Fox, Ben Sanderson, Corinna Spencer, Lucy Stein.

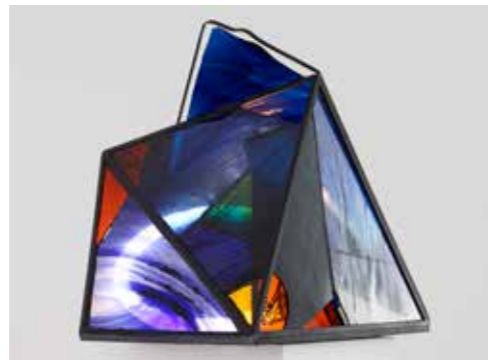
*(detail) Night and Day © Freya Douglas-Morris*



## A CERTAIN KIND OF LIGHT

*LIGHT IN ART OVER SIX DECADES*

27 MAY – 23 SEP



*Peter Lanyon, Colour Construction. 1960. Arts Council Collection, Southbank Centre, London © Sheila Lanyon*

*A Certain Kind of Light* explores how artists from the 1960s to the present day have responded to light, in paintings, sculpture, photography and installation.

Given its function as the basis for vision, light has long fascinated artists as both a material and as a subject. The exhibition considers the different ways artists have explored the various aspects of light, from its importance as a source of illumination, as a pure sculptural material, as a mysterious force and as a source of energy that can be conceptually converted into other forms.

Artists in the exhibition: Roger Ackling, David Batchelor, Angela Bulloch, Garry Fabian Miller, Ceal Floyer, Peter Freeman, Raphael Hefti, Anish Kapoor, Peter Lanyon, Julian Opie, John Riddy, Mark Titchner, Paul Winstanley, Toby Ziegler.

*An Arts Council Collection Touring Exhibition. Curated by Towner Art Gallery, Eastbourne with many works from the Arts Council Collection which is managed by Southbank Centre, London.*

## CRAFTSCHOOL

22 JUL – 16 SEP

An exhibition that focusses on the art of making, in particular the renaissance of handcrafting functional objects with a purity of materials. Integral to the exhibition will be a practical workshop space in the upper gallery for craft-making. One-hour 'taster' classes will be led each morning by regional makers (free with admission), with charged, full-day intensive workshops on Saturdays.

Craft from a range of makers will be displayed alongside artists' film and photography that focusses on the art of making, a connection to materials and sharing of skills. With so much manufactured disposal objects in our world, it is a reminder that we can all make objects with our hands.

*Details of which classes are available each day will be listed on our website. They will be suitable for all ages over 7 years. U12s must be accompanied by an adult. A donation is requested for materials.*

*Bookings for morning classes need to be made in person in the Gallery. Bookings and payment for Saturday workshops will be through eventbrite.*



THE ENGINE ROOM SERIES,  
THE EXCHANGE



*(detail) Nickie Carlyon, Sledging with Nanny The Goat!*

ANNUAL VOLUNTEERS' EXHIBITION  
5 - 20 MAY

Coinciding with Voluntary Arts Week this exhibition is a celebration of the talents of our diverse group of dedicated volunteers.

NICKIE CARLYON: *IN MY MOTHER'S FOOTSTEPS*

27 MAY - 15 JUL

A poignant exhibition inspired by conversations between Nickie and her mother, Elspeth, now in her nineties, centering on an envelope of photographs which document Elspeth's childhood on Vancouver Island.

FOLLOW MY STORY

4 AUG - 7 OCT

An exhibition of illustrations and text from The Follow My Story project, led by artists Theo Carter-Weber and Liz Howell, working with pupils from Newlyn School at Newlyn Art Gallery.

10TH ANNIVERSARY

2017 marks ten years since the opening of The Exchange and the redevelopment of Newlyn Art Gallery. Celebrate with us this summer!



THE PICTURE ROOM,  
NEWLYN ART GALLERY



*Forest Obscura III © Oliver Raymond-Barker*

The Picture Room shows monthly changing exhibitions of works for sale by Cornwall-based artists.

OLIVER RAYMOND-BARKER

5 JUN - 15 JUL

Printmaker and photographer based in Falmouth who will be showing a series of photographic works created in forests and mountains.

NINA ROYLE

22 JUL - 19 AUG

A body of new works on hand-shaped gesso panels. Each painting is an individual expression of landscape, weather, and materiality.

SAMUEL BASSETT

21 AUG - 16 SEP

A collection of limited edition prints, including etchings and screen prints, which Bassett creates alongside his painted works.

*All profits from the shop, café and Picture Room directly support our exhibition and education activities*

DIY MAKE & DO ACTIVITIES

Drop in to either of our venues during the school holidays and you will find instructions and materials to get stuck into fun and inspiring creative activities for all the family. *Free with admission.*

THE EXCHANGE

LITTLE MOVEMENT & MUSIC PROJECT  
WEDNESDAYS, 10.00 (FOR TODDLERS 18 MONTHS+) & FRIDAYS 10.00, 10.45 & 11.30 (FOR BABIES UP TO 18 MONTHS)

Early years music education with developmental movement activities to explore creativity and develop early skills. £60 for 12-week term.

*To book call 07794 713 320 or email [info@emmiworkshops.org](mailto:info@emmiworkshops.org)*

GOLOWAN WORKSHOPS

*All welcome, U12s to be accompanied by an adult. Free with admission.*

PAPER COSTUME WORKSHOP

WED 31 MAY & THU 1 JUN, 13.00 - 16.00

What to wear when all at sea? Design a stylish paper outfit and/or headdress for parade day and before.

BOAT MAKING WORKSHOP

FRI 2 JUN, 13.00 - 16.00

Does your boat float or does it need to be a boat to float? Make your own beautiful boat with Billy Wynter.

PENZANCE LIT FEST

FRI 9 JUN, 11.00 - 13.00

A welcome return of The Wormery, the Gallery's reading portal which will discuss text and images inspired by themes of *A Certain Kind of Light* led by Penny Florence and Lucy Stein. Text and images provided on the day. *Free but please book through eventbrite.*